



## Speed + Strength

### LOCTITE 4090 – Hybrid Adhesive

LOCTITE 4090 adhesive is an innovative hybrid that combines the bond strength and speed you need to solve your design and assembly challenges. With the speed of an instant adhesive and the strength of a structural adhesive, LOCTITE 4090 delivers both performance and versatility.

This powerful combination provides high impact resistance, high strength adhesion on a variety of substrates, as well as high temperature resistance – making LOCTITE 4090 the ideal bonding companion. LOCTITE 4090 opens the door to new applications and new solutions.

#### Key Benefits of LOCTITE 4090

- Strength of a structural adhesive
- Speed of an instant adhesive
- High impact and vibration resistance
- Temperature resistance up to 150°C
- Gap filling up to 5mm
- Moisture resistance
- Suitable for a variety of substrates, including metals, most plastics and rubbers



**LOCTITE 4090** delivers high quality performance in extreme environments and challenging conditions. This hybrid adhesive provides the necessary versatility to solve multiple design, assembly and repair challenges.

In addition to combining the critical attributes of structural and instant adhesives, LOCTITE 4090 offers:

- Fast fixture times even at low temperatures (5°C)
- Low blooming
- Good UV resistance
- Optimised packaging and longer open times for larger surface applications

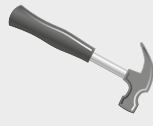


## Product Features



### Speed

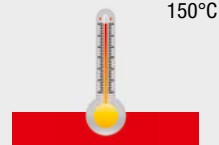
for applications that require the speed of an instant adhesive



**High Impact Resistance**  
for highly stressed joints and applications subjected to vibration.



**High Moisture Resistance**  
for applications that demand good humidity and solvent resistance in various environments



**Up to 150°C Temperature Resistance**  
tested to resist even extreme heat conditions



**Gap Filling up to 5mm**  
for fast bonding of structural parts.

## Technical Data

<b>Colour</b>	Slightly cloudy to light yellow
<b>Appearance</b>	High viscosity gel
<b>Mix ratio (volume)</b>	1:1
<b>Working time</b>	3 to 5 min.

## Properties of Cured Material

<b>Lap shear strength, ISO 4587, after 24 hours, 22°C</b>	Steel (grit blasted) Aluminium (etched) Polycarbonate	17 N/mm <sup>2</sup> 13 N/mm <sup>2</sup> 6.9 N/mm <sup>2</sup>
<b>High gap fill</b>	Up to 5 mm depending on bond geometry	
<b>Temperature resistance</b>	-40°C to 150°C	
<b>Chemical resistance</b>	Very good chemical/solvent resistance	

**Henkel Ltd**  
Wood Lane End  
Hemel Hempstead,  
Hertfordshire  
HP2 4RQ  
Tel.: +44 (0) 1442 278000  
Fax : +44 (0) 1442 278071  
[www.loctite.co.uk](http://www.loctite.co.uk)

